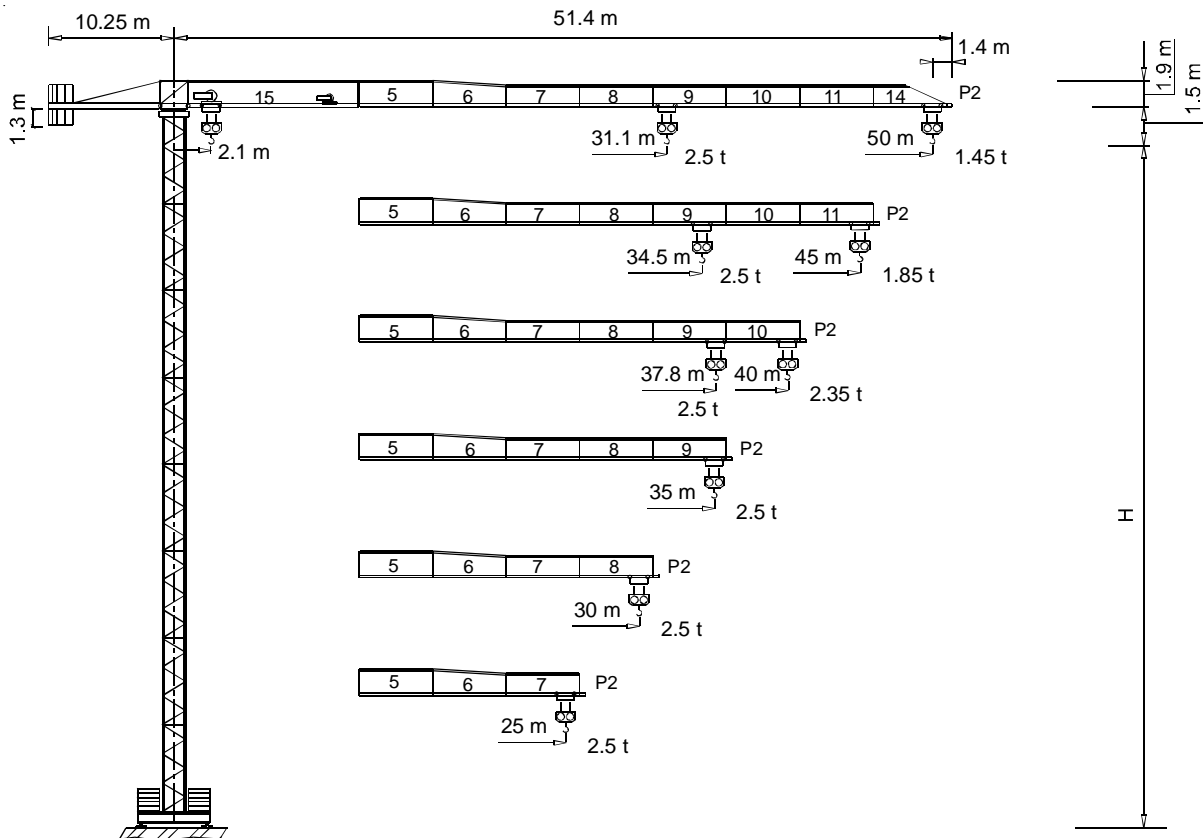


**Gru a torre "Flat Top"**

**"Flat Top" Tower Crane • Grue à tour "Flat Top"**  
**"Flat Top" Turmdrehkran • Grúa torre "Flat Top"**



 **FEM 1.001 A3**

**THE ULTIMATE CRANE™**

Dati illustrativi non impegnativi  
 Con riserva di modifica senza preavviso

Specifications and data not binding  
 Subject to modification without notice

Données techniques seulement indicatives  
 Modifications réservées sans préavis

Angaben und Beschreibung unverbindlich  
 Änderungen vorbehalten ohne weitere Mitteilung

Dibujos y datos sin compromiso  
 Modificaciones reservadas sin preaviso

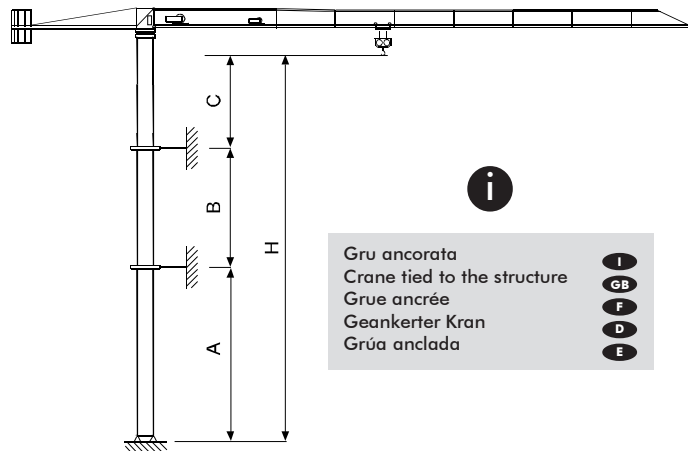
UTE.DOC. REV.002

**"CITY" CTT 91-2.5 TS12**

**Diagramma di portata** (I)      **Courbes de charges** (F)      **Curvas de cargas** (E)  
**Load Diagram** (GB)      **Lastkurven** (D)

| CTT 91-2.5 |           |   |     |     |     |     |     |     |      |      |      |      |
|------------|-----------|---|-----|-----|-----|-----|-----|-----|------|------|------|------|
|            |           | m | 5   | 10  | 15  | 20  | 25  | 30  | 35   | 40   | 45   | 50   |
| 2.5 t      | - 31.11 m | t | 2.5 | 2.5 | 2.5 | 2.5 | 2.5 | 2.5 | 2.19 | 1.88 | 1.64 | 1.45 |
| 2.5 t      | - 34.49 m | t | 2.5 | 2.5 | 2.5 | 2.5 | 2.5 | 2.5 | 2.46 | 2.12 | 1.85 |      |
| 2.5 t      | - 37.85 m | t | 2.5 | 2.5 | 2.5 | 2.5 | 2.5 | 2.5 | 2.5  | 2.35 |      |      |
| 2.5 t      | - 35 m    | t | 2.5 | 2.5 | 2.5 | 2.5 | 2.5 | 2.5 | 2.5  |      |      |      |
| 2.5 t      | - 30 m    | t | 2.5 | 2.5 | 2.5 | 2.5 | 2.5 | 2.5 |      |      |      |      |
| 2.5 t      | - 25 m    | t | 2.5 | 2.5 | 2.5 | 2.5 | 2.5 |     |      |      |      |      |

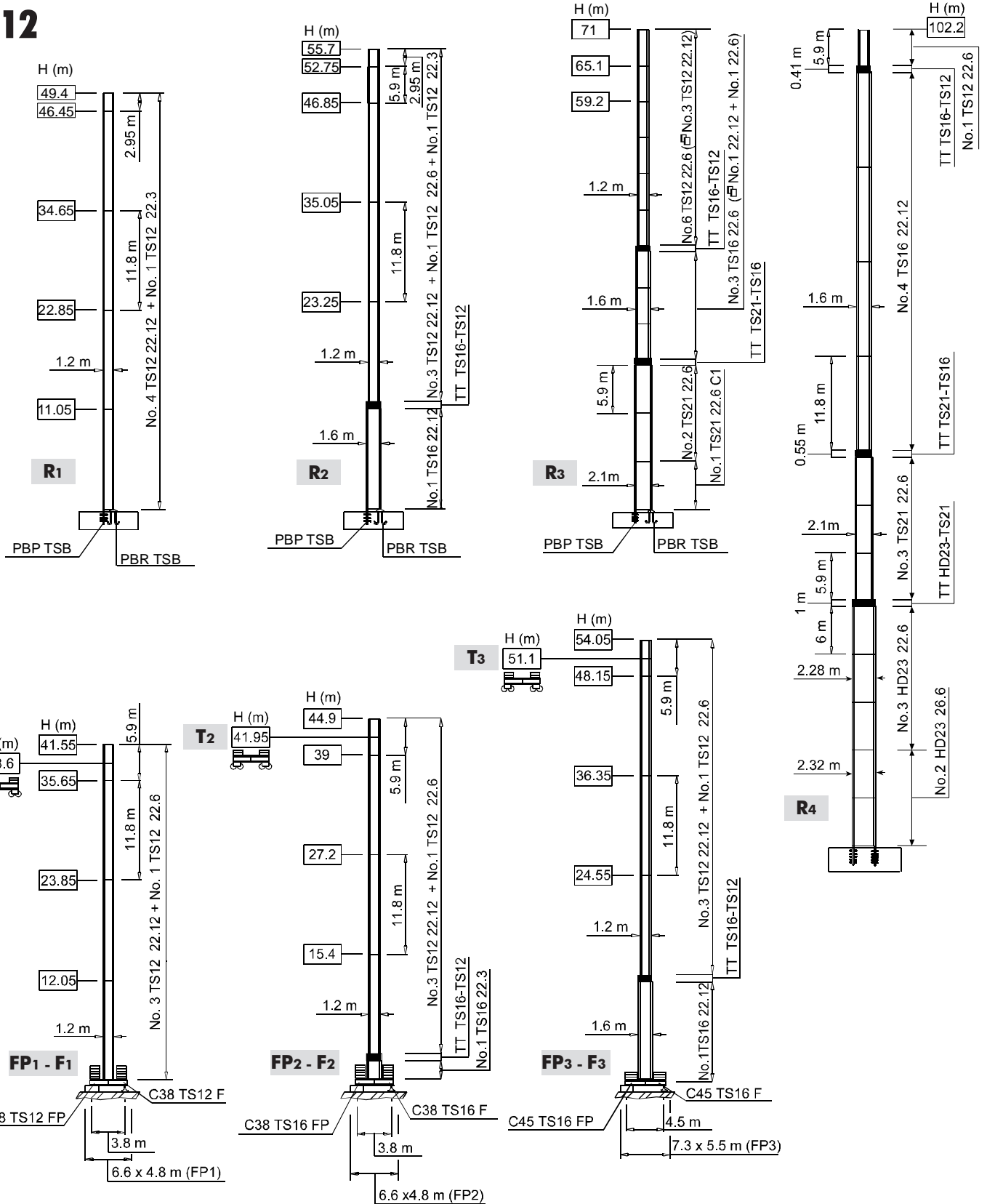
**Altre installazioni** (I)      **Autres implantations** (F)      **Otras implantaciones** (E)  
**Other configurations** (GB)      **Aufstellmöglichkeiten** (D)



Torre **I** Tower **GB** Tour **F** Turm **D** Torre **E**

- I** Le prolunghe TS sono disponibili in lunghezze 11.8 m, 5.9 m, 2.95 m.
- GB** The available lengths for the TS tower sections are 11.8 m, 5.9 m, 2.95 m.
- F** Les éléments de mât TS sont disponibles en longueur 11.8 m, 5.9 m, 2.95 m.
- D** Die Turmschüsse TS sind mit Längen 11.8 m, 5.9 m, 2.95 m verfügbar.
- E** Los tramos de torre TS son disponibles en las medidas de largo 11.8 m, 5.9 m, 2.95 m.

**TS12**



|                   |           |                   |          |                   |          |
|-------------------|-----------|-------------------|----------|-------------------|----------|
| <b>Meccanismi</b> | <b>I</b>  | <b>Mécanismes</b> | <b>F</b> | <b>Mecanismos</b> | <b>E</b> |
| <b>Mechanisms</b> | <b>GB</b> | <b>Antriebe</b>   | <b>D</b> |                   |          |

|  |           |          |                               |
|--|-----------|----------|-------------------------------|
|  |           |          |                               |
|  | 11 APC 25 | 31 * kVA | 400 V - 50 Hz                 |
|  | 15 AFC 25 | 40 * kVA | 400 V - 50 Hz / 460 V - 60 Hz |
|  |           |          | 2000/14/CE                    |

\* Gru senza traslazione / Crane without travelling equipment / Grue sans translation / Krane ohne Schienenfahren / Grúa sin traslación

|  |                            | <b>m/min</b> | <b>f</b> | <b>kW</b> |       |
|--|----------------------------|--------------|----------|-----------|-------|
|  | <b>11 APC 25</b>           | 6            | 2.5      | 11        | 186 m |
|  |                            | 20           | 2.5      |           |       |
|  |                            | 40           | 1.25     |           |       |
|  | <b>15 AFC 25 (VARIANT)</b> | 0 ⇌ 1.7      | 2.5      | 15        | 186 m |
|  |                            | 1.7 ⇌ 6      | 2.5      |           |       |
|  |                            | 6 ⇌ 28       | 2.5      |           |       |
|  |                            | 28 ⇌ 46      | 1.44     |           |       |
|  |                            | 46 ⇌ 57      | 1.1      |           |       |

|  |                             |                       |              |
|--|-----------------------------|-----------------------|--------------|
|  | <b>DAD 2 2 D1</b>           | 0 - 22 - 44 m/min     | 2.2 - 1.5 kW |
|  | <b>DVF 3 4 D4 (VARIANT)</b> | 0 ⇌ 6 ⇌ 30 ⇌ 60 m/min | 4 kW         |
|  | <b>SSR 1 1 65</b>           | 0.76 r.p.m.           | 1 × 65 Nm    |
|  | <b>▲ TAD 1RP 2M3</b>        | 0 - 24 m/min          | 2 × 3 kW     |
|  | <b>● TAD 2RP 2M3</b>        |                       |              |
|  | <b>i</b>                    |                       |              |

|                      | <b>Max. H [m]</b> |      |
|----------------------|-------------------|------|
| <b>T<sub>1</sub></b> | 38.6              | -    |
| <b>T<sub>2</sub></b> | 41.95             | -    |
| <b>T<sub>3</sub></b> | -                 | 51.1 |

|  |                                |          |                          |           |                                    |          |  |          |                                   |          |
|--|--------------------------------|----------|--------------------------|-----------|------------------------------------|----------|--|----------|-----------------------------------|----------|
|  | Sollevamento                   | <b>I</b> | Hoisting                 | <b>GB</b> | Levage                             | <b>F</b> | Heben                                    | <b>D</b> | Elevación                         | <b>E</b> |
|  | Traslazione carrello           |          | Trolleying               |           | Distribution                       |          | Katzfahren                               |          | Distribución                      |          |
|  | Rotazione                      |          | Slewing                  |           | Orientation                        |          | Schwenken                                |          | Orientación                       |          |
|  | Traslazione                    |          | Travelling               |           | Translation                        |          | Schienenfahren                           |          | Traslación                        |          |
|  | Direttiva sul livello acustico |          | Directive on noise level |           | Directive sur le niveau acoustique |          | Richtlinie für den Schall-Leistungspegel |          | Directiva sobre el nivel acustico |          |
|  | Consultateci                   |          | Consult us               |           | Nous consulter                     |          | Auf Anfrage                              |          | Consultarnos                      |          |
|  | Potenza totale richiesta       |          | Power requirements       |           | Puissance totale nécessaire        |          | Geforderte Stromstärke                   |          | Potencia necesaria                |          |
|  | Alimentazione                  |          | Power supply             |           | Alimentation                       |          | Stromversorgung                          |          | Alimentación                      |          |

**Gru Comedil s.r.l.**  
 A Terex Company  
  
 certificato in accordo alla norma iso 9001:2000

Via S. Egidio 42/A, 33074 Fontanafredda (PN) - Italy  
 Tel. (+39) 0434 567 311 - Telefax (+39) 0434 998631

Internet e-mail: info@comedil.com  
 Internet home page: www.comedil.com

**Divisione Automontanti**  
 Via Alessandrina, 25 - 20095 Cusano Milanino (MI) - Italy  
 Tel. (+39) 02 613 16011 - Telefax (+39) 02 613 16034  
 Internet e-mail: info.CBR@comedil.com